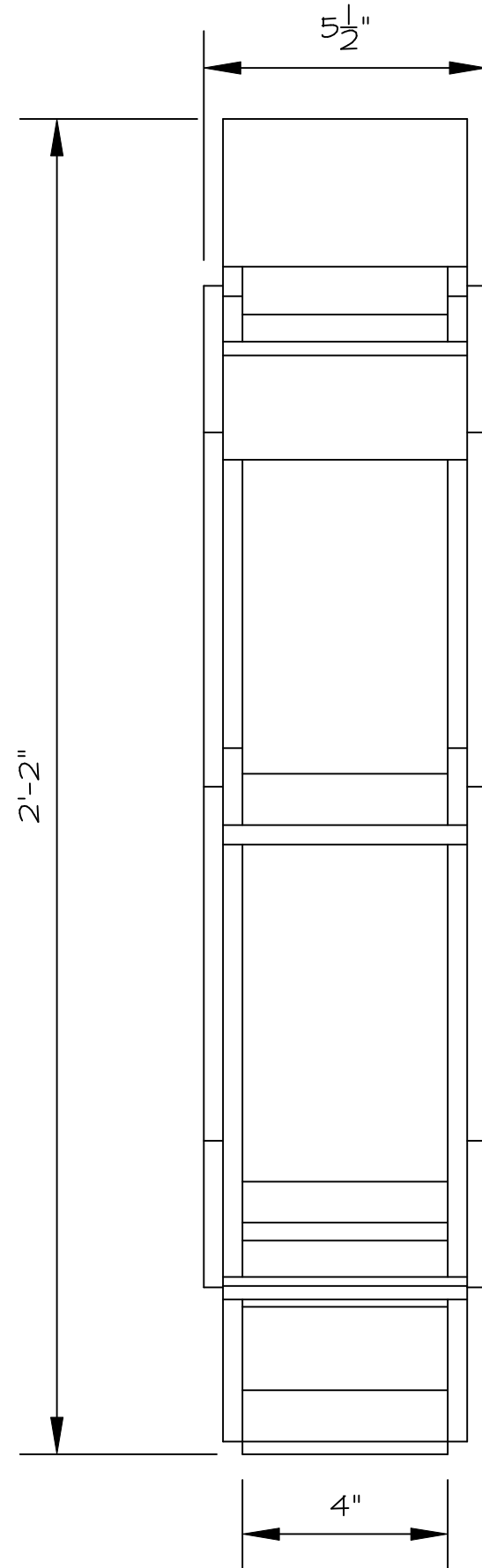


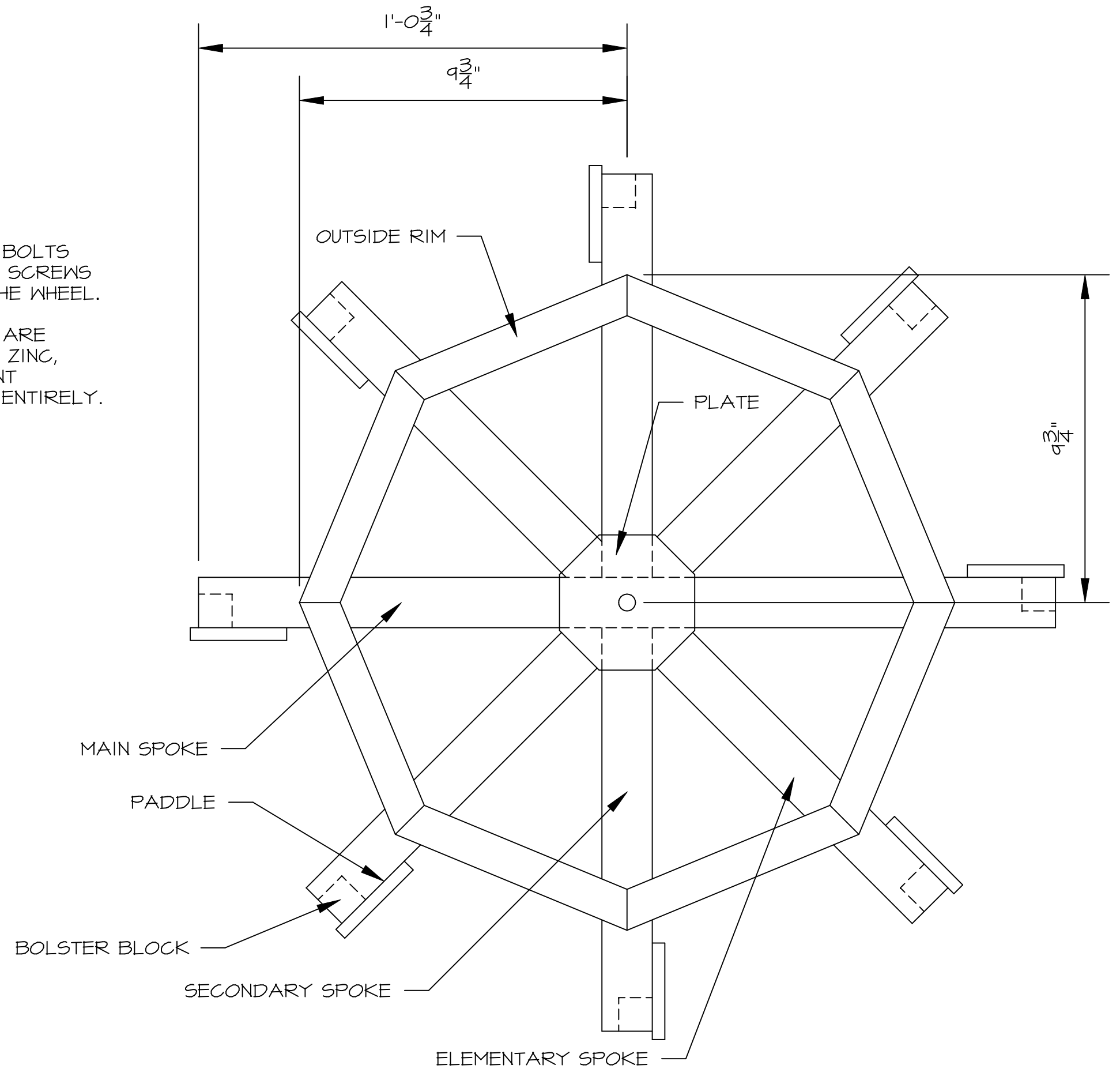
# DAVIS FAMILY WATER WHEEL

SMALLER TWO FOOT PROTOTYPE



I USED MACHINE BOLTS  
INSTEAD OF WD. SCREWS  
TO ASSEMBLE THE WHEEL.

BRASS SCREWS ARE  
PREFERABLE. IF ZINC,  
MAKE SURE PAINT  
COVERS BOLTS ENTIRELY.



NOT TO SCALE